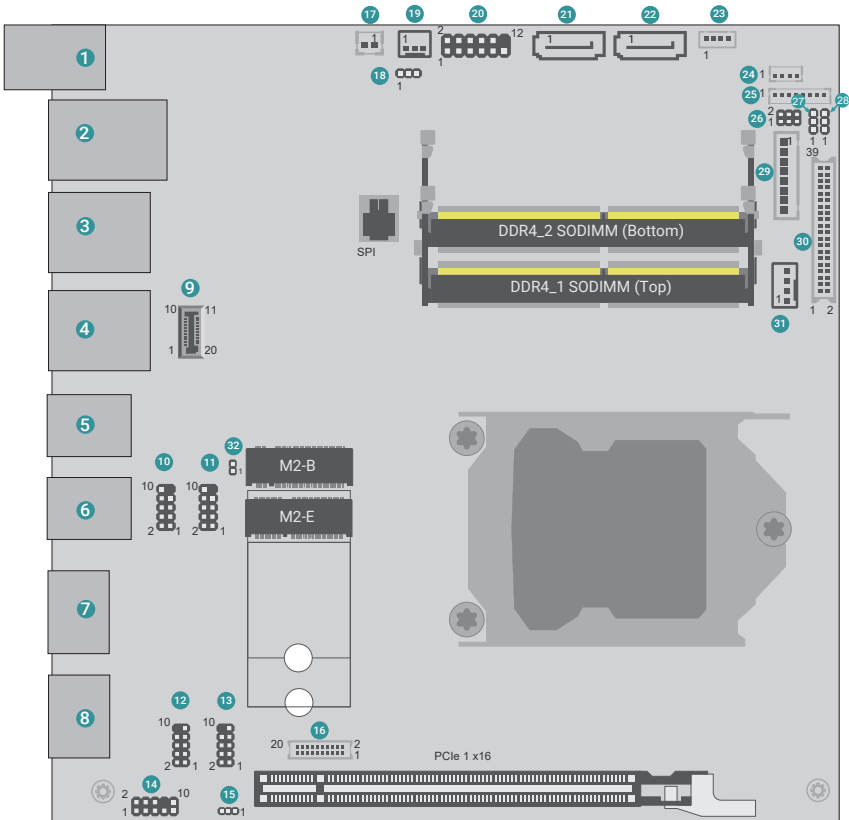
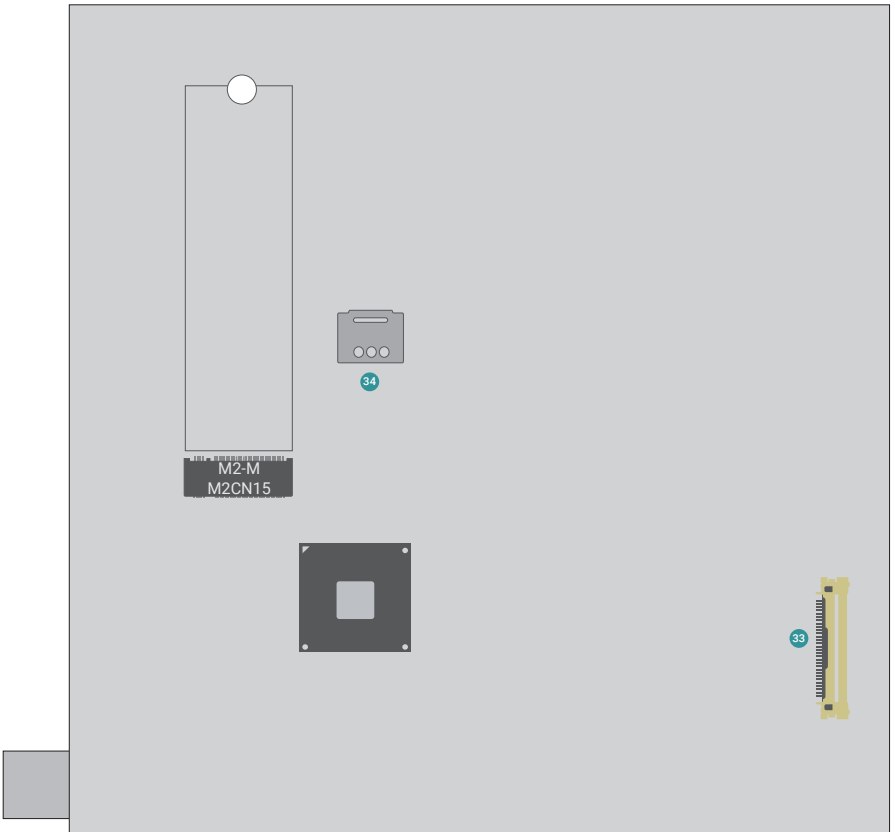


## Board Layout

### Top View



## Bottom View



1	DC-in	21	SATA0
2	LAN1	22	SATA1
3	LAN2 / USB3.2 Gen2	23	SATA Power
4	LAN3	24	DIO Power
5	USB3.2 Gen2	25	DIO
6	USB3.2 Gen2	26	LCD Panel Power Supply
7	DP++ / HDMI	27	Power Level of LVDS LCD Inverter Connector
8	DP++	28	LVDS LCD Panel Power Supply
9	USB3_5/6 USB2_12/13	29	LVDS Power
10	USB2_8/9	30	LVDS
11	USB2_5/6	31	CPU Fan
12	COM1	32	SOJ1
13	COM2	33	eDP
14	Front Audio	34	SIM Card Slot
15	USB Wake Up Select		
16	DDI		
17	Battery		
18	Clear CMOS Data		
19	System Fan		
20	Front Panel		



## Jumper Settings

Clear CMOS Data	JP5
Normal (default)	1-2 On
Clear CMOS Data	2-3 On

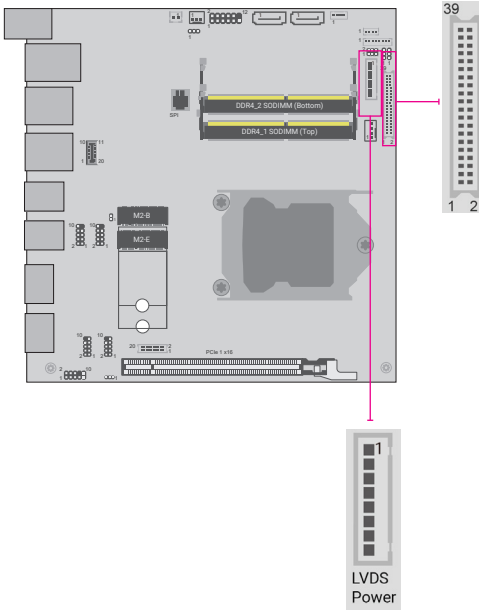
USB Wake Up Select	DPJP604
5VSB (default)	1-2 On
5V	2-3 On

the power level of LVDS LCD inverter connector	DPJP2
+12V (default)	1-2 On
+5V	2-3 On

the power supplied with the LCD panel	DPJP3
+12V	1-2 On
+5V	3-4 On
+3.3V (default)	5-6 On

the power supplied with the LVDS LCD panel	DPJP601
3.3V (default)	1-2 On
5V	2-3 On

# PIN Assignment

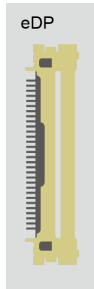
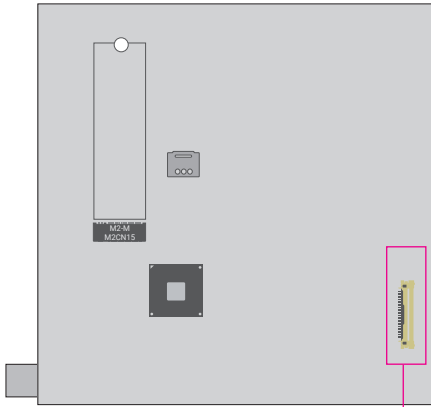


## LVDS LCD Panel

Pin	Assignment	Pin	Assignment
1	GND	2	GND
3	LVDSA_3+	4	LVDSB_3+
5	LVDSA_3-	6	LVDSB_3-
7	GND	8	GND
9	LVDSA_2+	10	LVDSB_2+
11	LVDSA_2-	12	LVDSB_2-
13	GND	14	GND
15	LVDSA_1+	16	LVDSB_1+
17	LVDSA_1-	18	LVDSB_1-
19	GND	20	GND
21	LVDSA_0+	22	LVDSB_0+
23	LVDSA_0-	24	LVDSB_0-
25	GND	26	GND
27	LVDSA_CLK+	28	LVDSB_CLK+
29	LVDSA_CLK-	30	LVDSB_CLK-
31	GND	32	GND
33	DDC_CLK	34	NC
35	DDC_DATA	36	+3.3V
37	Panel Power	38	Panel Power
39	Panel Power	40	Panel Power

## LCD/Inverter Power

Pin	Assignment
1	GND
2	GND
3	Panel Inverter Brightness Voltage Control
4	Panel Power
5	+3.3V
6	Panel Backlight On/Off Control
7	LCD/Inverter Power
8	LCD/Inverter Power



### eDP

Pin	Assignment	Pin	Assignment
1	NC	21	eDP_PANEL_PWR
2	VCC_INV_PWR	22	eDP_PANEL_PWR
3	VCC_INV_PWR	23	eDP_PANEL_PWR
4	VCC_INV_PWR	24	GND
5	VCC_INV_PWR	25	eDP_AUXN_C
6	NC	26	eDP_AUXP_C
7	NC	27	GND
8	DIMMING	28	eDP_LANE0_P
9	BLONOFF	29	eDP_LANE0_N
10	GND	30	GND
11	GND	31	eDP_LANE1_P
12	GND	32	eDP_LANE1_N
13	GND	33	GND
14	eDP_HDP_C	34	eDP_LANE2_P
15	GND	35	eDP_LANE2_N
16	GND	36	GND
17	GND	37	eDP_LANE3_P
18	GND	38	eDP_LANE3_N
19	NC	39	GND
20	eDP_PANEL_PWR	40	NC

## Front Panel

	Pin	Assignment		Pin	Assignment
	1	NC	<b>PWR-LED</b>	2	LED Power
<b>HD-LED</b>	3	HDD Power		4	LED Power
	5	Signal		6	Signal
<b>RESET</b>	7	GND	<b>ATX-SW</b>	8	GND
	9	Signal		10	Signal
	11	NC		12	---

## Digital I/O

Pin	Assignment
1	DIO0
2	DIO1
3	DIO2
4	DIO3
5	DIO4
6	DIO5
7	DIO6
8	DIO7

## Digital I/O Power

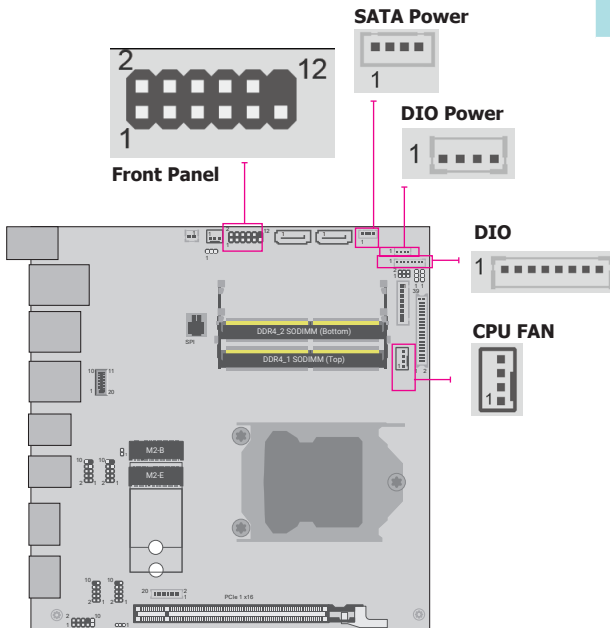
Pin	Assignment
1	+12V
2	GND
3	5VSB
4	+5V

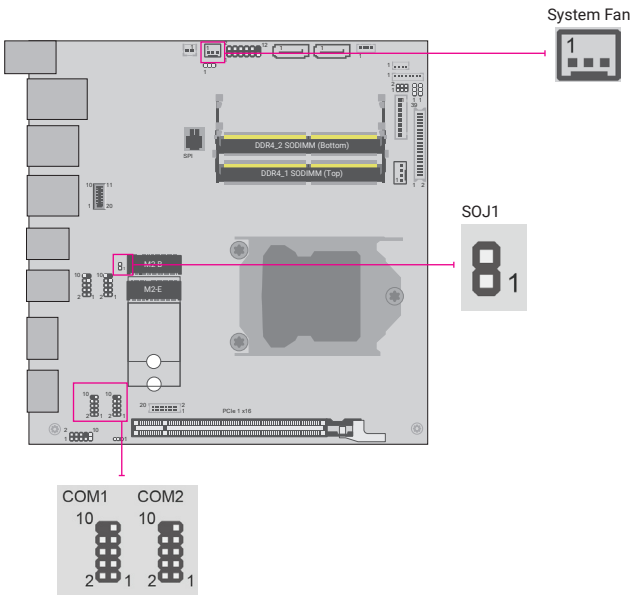
## CPU FAN

Pin	Assignment
1	GND
2	Power
3	Sense
4	Speed Control

## SATA Power

Pin	Assignment
1	+12V
2	GND
3	GND
4	5V





### J15 COM1 / J16 COM2

Pin	RS232	RS422 Full Duplex	RS485
1	DCD-	TXD-	DATA-
2	RD	TXD+	DATA+
3	TD	RXD+	N.C.
4	DTR-	RXD-	N.C.
5	GND	GND	GND
6	DSR-	N.C.	N.C.
7	RTS-	N.C.	N.C.
8	CTS-	N.C.	N.C.
9	RI-	N.C.	N.C.

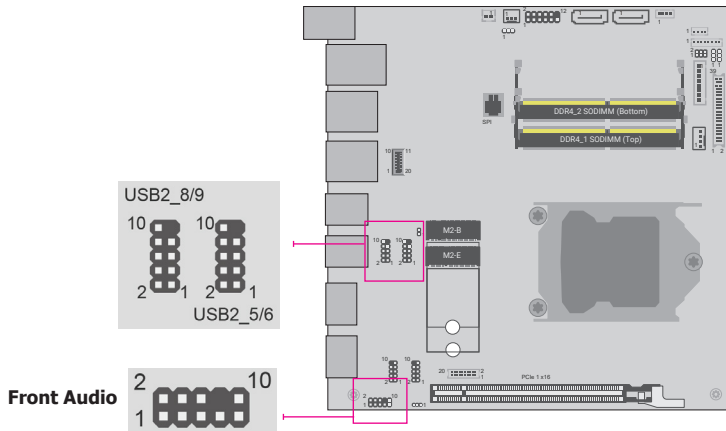
### SOJ1

Pin	Assignment
1	Signal
2	GND

### System Fan

Pin	Assignment
1	GND
2	PWM
3	TACH





### Front Audio

Pin	Assignment	Pin	Assignment
1	Mic-L	2	GND
3	Mic-R	4	NC
5	Line-Out-R	6	Mic-JD (sense)
7	GND	8	KEY
9	Line-Out-L	10	Line-JD (sense)

### USB 2.0 5-6/8-9 Headers

Pin	Assignment	Pin	Assignment
1	PWR	2	PWR
3	DATA-	4	DATA-
5	DATA+	6	DATA+
7	GND	8	GND
9	---	10	NC



DFI reserves the right to change the specifications at any time prior to the product's release. This QR may be based on the product's revision. For more documentation and drivers, please visit the download page at [www.dfi.com/downloadcenter](http://www.dfi.com/downloadcenter), or via the QR codes to the right.

