

DFI

RAP310

Equipped with next generation
5 nm Processor



AMD
RYZEN
Embedded



RAP310 boasts a high-performance **Zen4** x86 CPU with integrated AMD Radeon graphics, providing exceptional video decode and encode capabilities.

Key Application



DDR5

4 DDR5 UDIMM up to 128GB



4K High Resolution

Supports 4K resolution



Triple Displays

1 VGA, 1 DP++, 1 HDMI



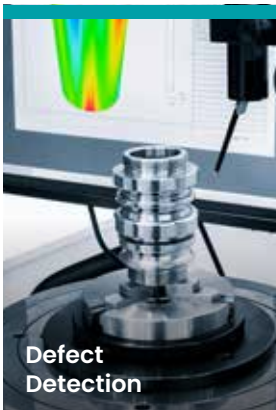
Multiple Expansion

2 PCIe x16, 2 PCIe x4,
1 M.2 E key, 1 M.2 M key,
4 SATA 3.0



Rich I/O

2 Intel 2.5GbE, 4 COM,
6 USB 3.2 Gen 2,
2 USB 3.2 Gen 1,
6 USB 2.0



Defect
Detection



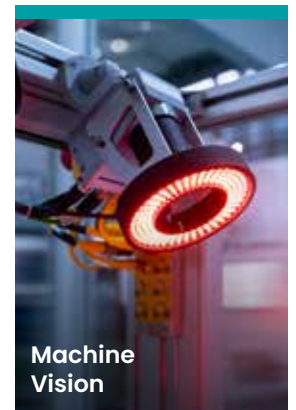
Pedestrian
Detection



Industrial
Robot



Medical Image
System



Machine
Vision

DFI Inc.

10F, No.97, Sec.1, Xintai 5th Rd., Xizhi Dist., New Taipei City 221416, Taiwan

Tel: +886 (2) 2697-2986 | Email: inquiry@dfi.com | Website: www.dfi.com

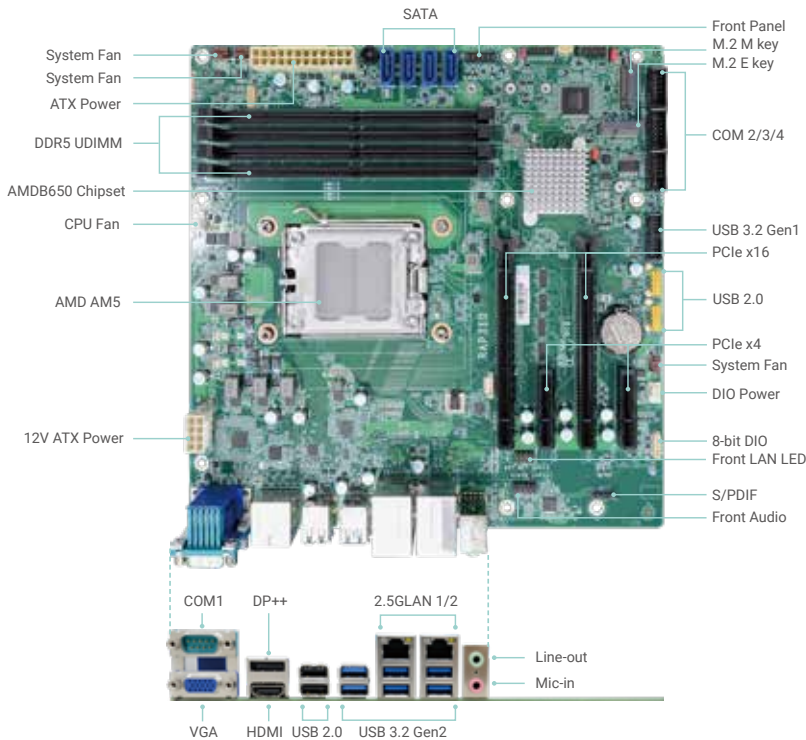


Specification

SYSTEM	Processor	AMD Ryzen 9 PRO 7945 AMD Ryzen 7 PRO 7745 AMD Ryzen 5 PRO 7645	
	Chipset	AMDB650	
	Memory	Four 288-pin UDIMM up to 128GB (ECC/Non-ECC) Dual Channel DDR5 5200 MHz	
	BIOS	AMI SPI 256Mbit	
GRAPHICS	Controller	Navi2 Graphics	
	Feature	1WGP @2.2GHz max	
	Display	1 x VGA 1 x DP++ 1 x HDMI 2.0	VGA: resolution up to 1920x1200 @ 60Hz DP++: resolution up to 3840x2160 @ 60Hz HDMI: resolution up to 4096x2160 @ 60Hz
	Triple Displays	1 VGA + 1 DP++ + 1 HDMI 2.0	
EXPANSION	Interface	2 x PCIe x16 (Gen 4, x16 or x8+x8) 2 x PCIe x4 (Gen 4) 1 x M.2 2230 E key 1 x M.2 2242/2260/2280 M key	
	Audio Codec	Realtek ALC888	
AUDIO	Controller	2 x Intel® I226V	
ETHERNET	Ethernet	2 x 2.5GbE (RJ-45)	
REAR I/O	Serial	1 x RS232	
	USB	6 x USB 3.2 Gen 2 2 x USB 2.0	
	Display	1 x VGA 1 x DP++ 1 x HDMI	
	Audio	1 x Line-out 1 x Mic-in 1 x Line-in (opt. by request, MOQ required)	

INTERNAL I/O	Serial	1 x RS-232/422/485 2 x RS232	
	USB	2 x USB 3.2 Gen1 4 x USB 2.0 (colay vertical Type A)	
	Audio	1 x Front Audio Header 1 x S/PDIF	
	SATA	4 x SATA 3.0	RAID 0/1/5/10
	DIO	1 x 8-bit DIO	
	PS/2	1 x PS/2	
	SMBus/ I ² C	1 x SMBus/ I ² C	
	WATCHDOG TIMER	Output & Interval	System Reset, Programmable via Software from 1 to 255 Seconds
	SECURITY	TPM	Nuvoton TPM 2.0
	POWER	Type	ATX
Connector		8-pin ATX 12V power 24-pin ATX power	
Consumption		TBD	
RTC Battery		CR2032 Coin Cell	
OS SUPPORT	Microsoft	Windows 11 Enterprise Windows 10	
	Linux	Ubuntu 22.04	
ENVIRONMENT	Temperature	Operating: -5 to 65°C Storage: -40 to 85°C	
	Humidity	Operating: 5 to 95% RH Storage: 5 to 95% RH	
	MTBF	TBD	
	MECHANISM	Dimensions	microATX Form Factor
MECHANISM	Height	PCB: 1.6mm Top Side: TBD Bottom Side: TBD	
	STANDARDS AND CERTIFICATIONS	Certifications	CE, FCC Class B, RoHS

Top View



Bottom View

